



BLUETONGUE

Belgium

Situation in ruminants
SCOFCAH, Brussels, August, 28 th 2006



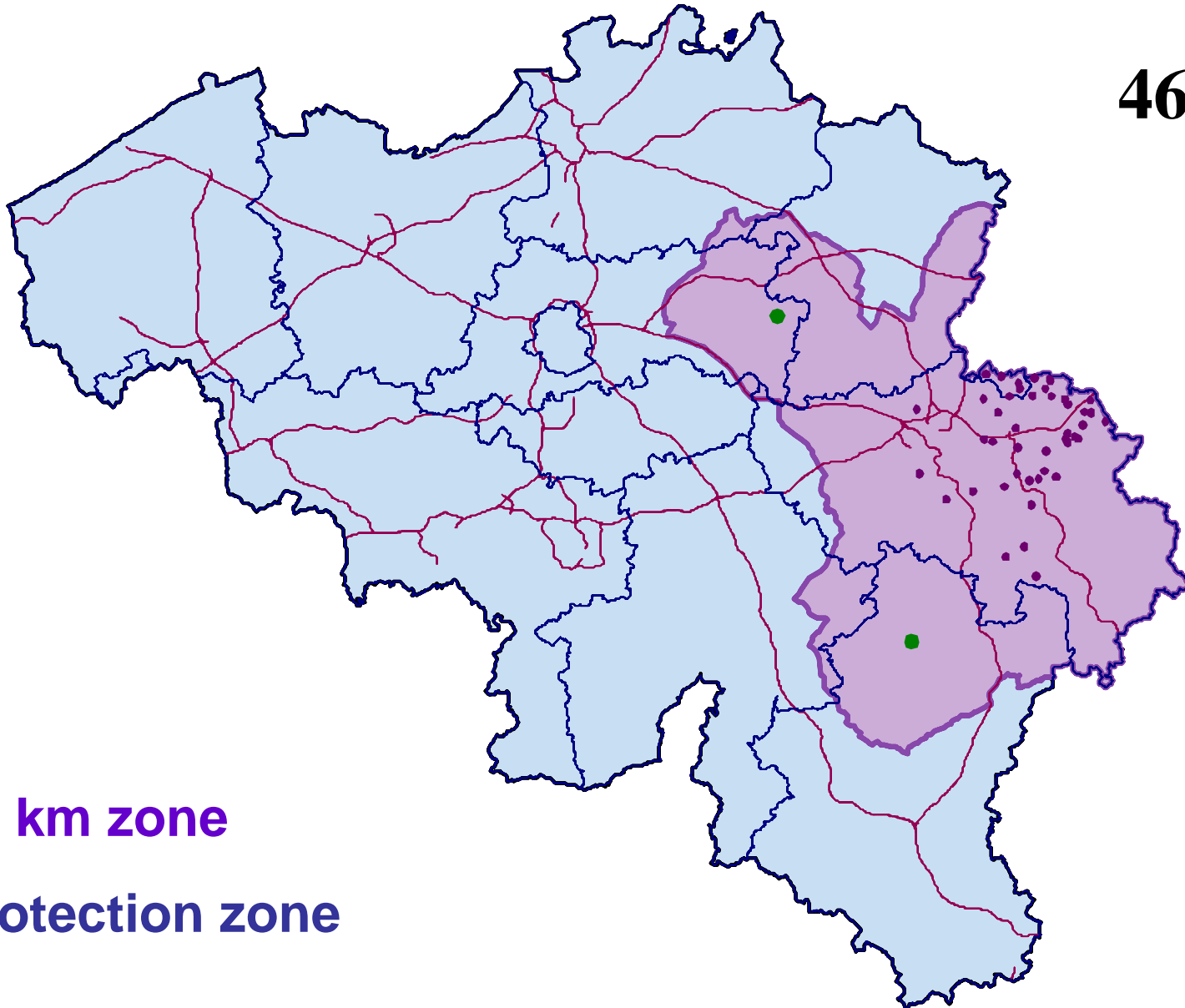
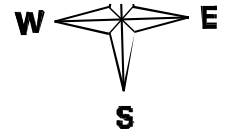
Situation on 2006-08-26

| cases | | 19th | 22nd | 23th | 24th | 25th | 26th | TOTAL |
|--------------|--------|------|------|------|------|------|------|-------|
| | | | | | | | | |
| Confirmed | SHEEP | 4 | 1 | 2 | 1 | | 2 | 46 |
| | BOVINS | 7 | 3 | | 10 | 9 | 7 | |
| Suspected | SHEEP | | 2 | | | | 1 | 8 |
| | BOVINS | | | | 3 | | 2 | |

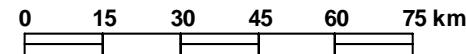
Zones since 2006-08-26 – 17.00h



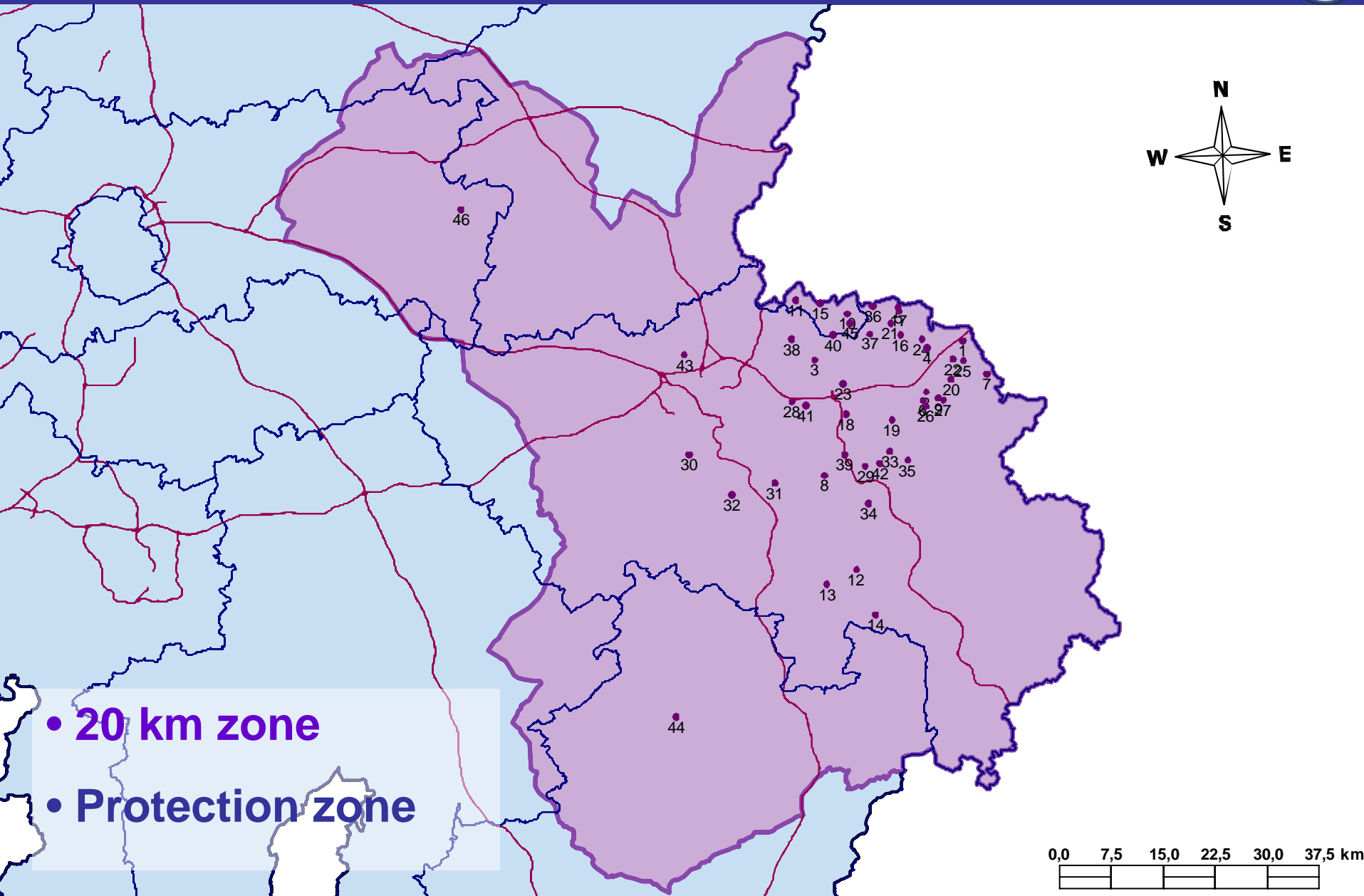
46 cases



- 20 km zone
- Protection zone



Detail of “20 km zone”

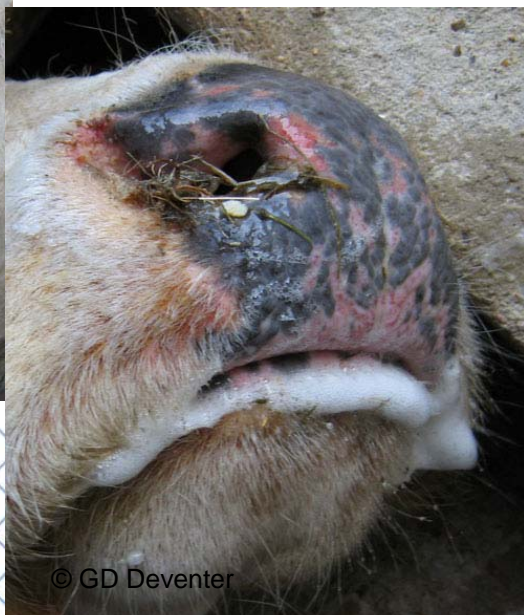


BLUETONGUE

The Netherlands 2006



Latitude:
North 50° 56' 29''



SCFCAH
28 August 2006

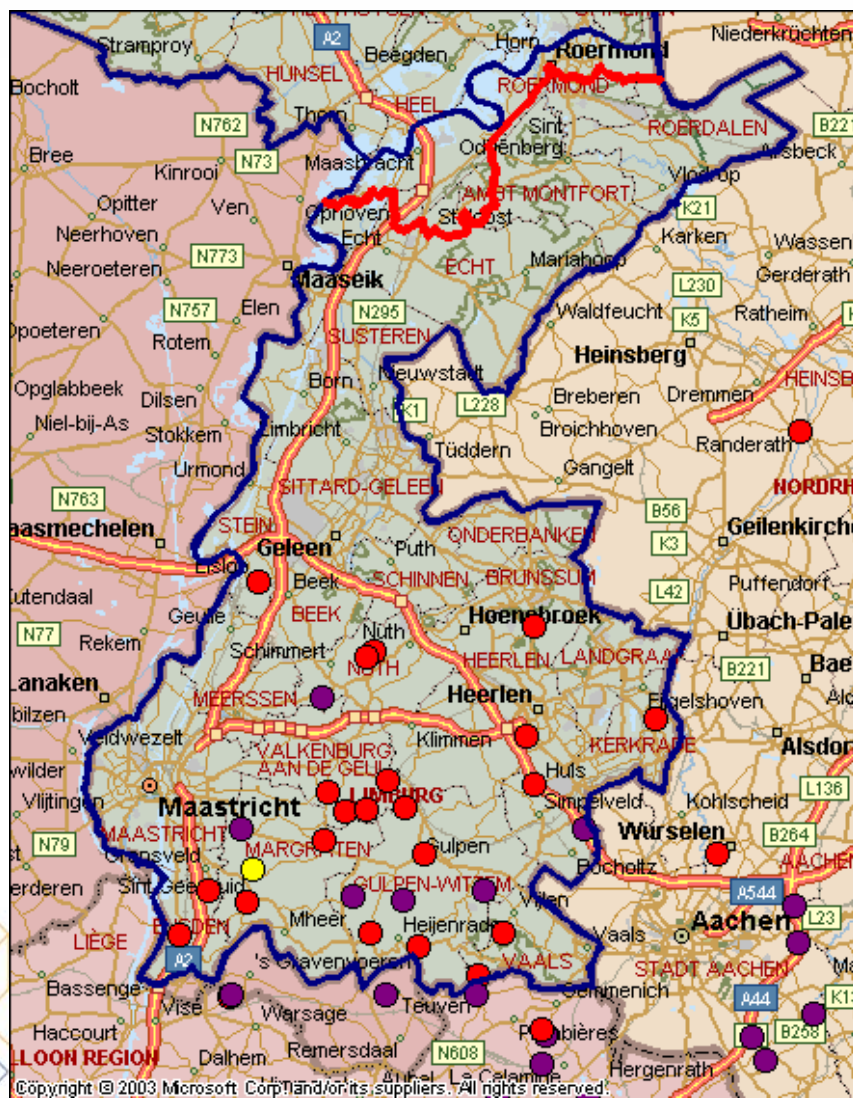
Till: 27-08-06, 12:00 hrs

Infected area / holdings

Till: 27-08-2006, 12:00 hrs:

28 holdings have been infected,
all located within the southern
part of the province Limburg

- 21 infected sheep holdings
(2 mixed sheep/cattle holdings)
- 7 infected cattle holdings
- 1 suspected sheep holding



Adapting borders

150 km restriction zone

- 150 km restriction zone
- proposed 150 km r.-zone





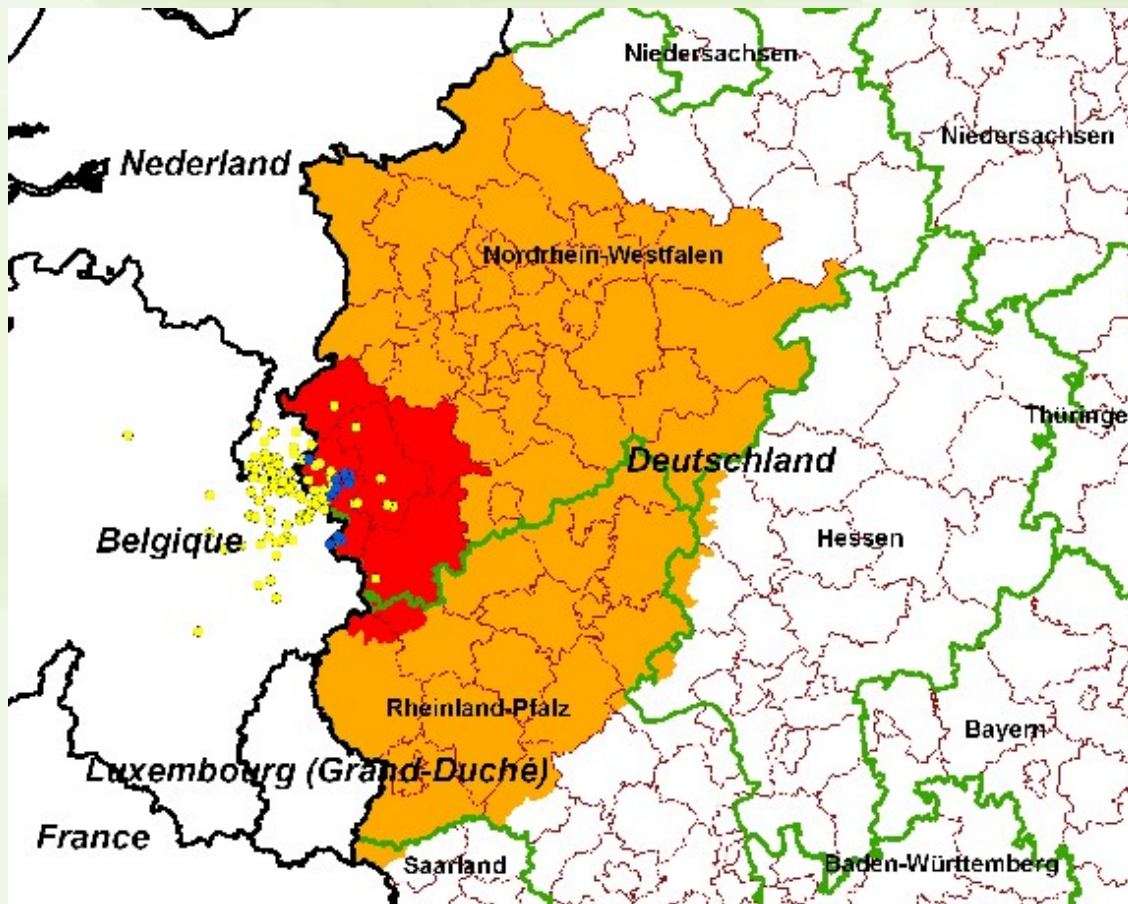
Bluetongue – situation and measures in the Federal Republic of Germany

SCoFCAH Brussels 28. August 2006





Bluetongue – distribution of cases (as of 28-8-06)



confirmed cases



suspicious



Bluetongue – confirmed cases in Germany – summary (as of 28-8-06)

| | number of farms involved | range of percentages of animals with clinical symptoms per holding | range of percentages of animals with positive lab results per holding |
|-------------------------|--------------------------------|---|--|
| cattle | 17 | 0,7 – 59,3 % | 0,4 – 11,1 % |
| sheep | 3 | 5,9 – 11,7 % | 5,9 – 11,7 % |
| goat/ mixed holdings | 0 | 0 | 0 |