



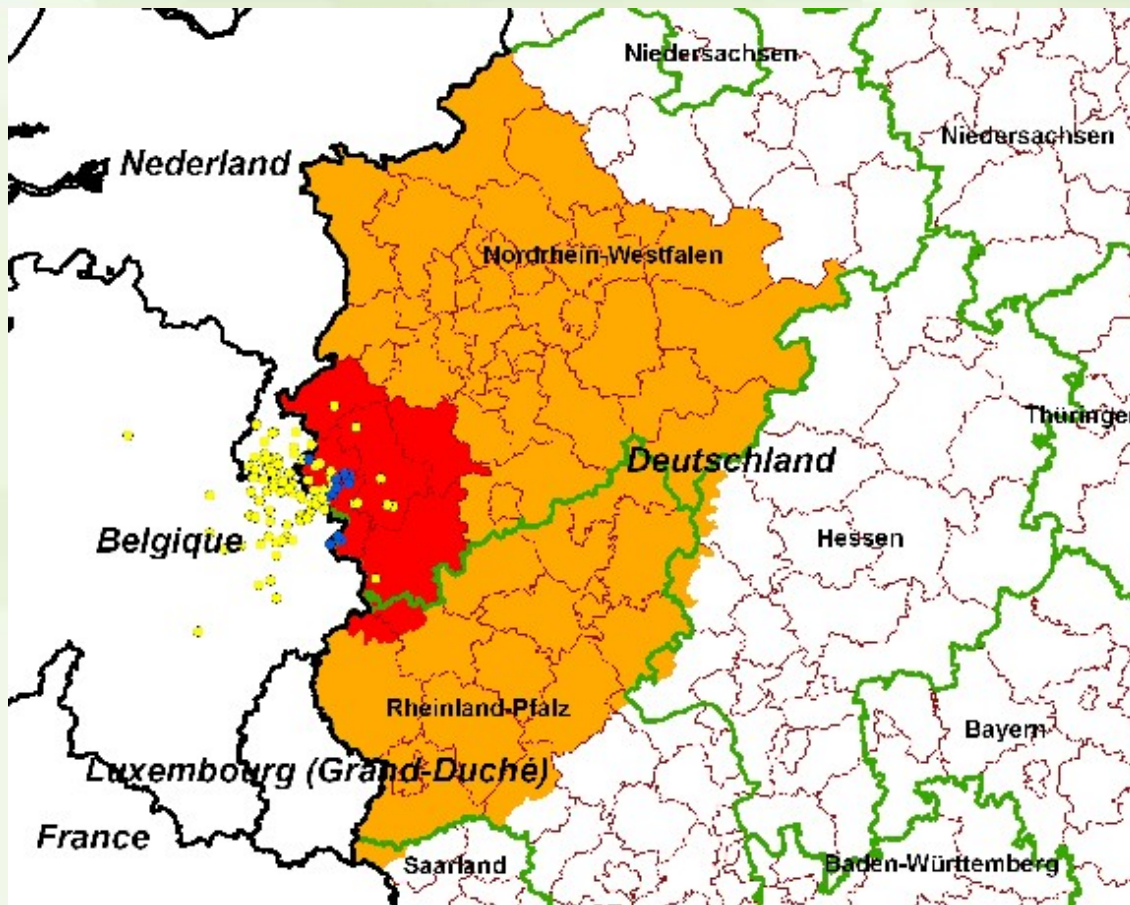
Bluetongue – situation and measures in the Federal Republic of Germany

SCoFCAH Brussels 28. August 2006





Bluetongue – distribution of cases (as of 28-8-06)



confirmed cases

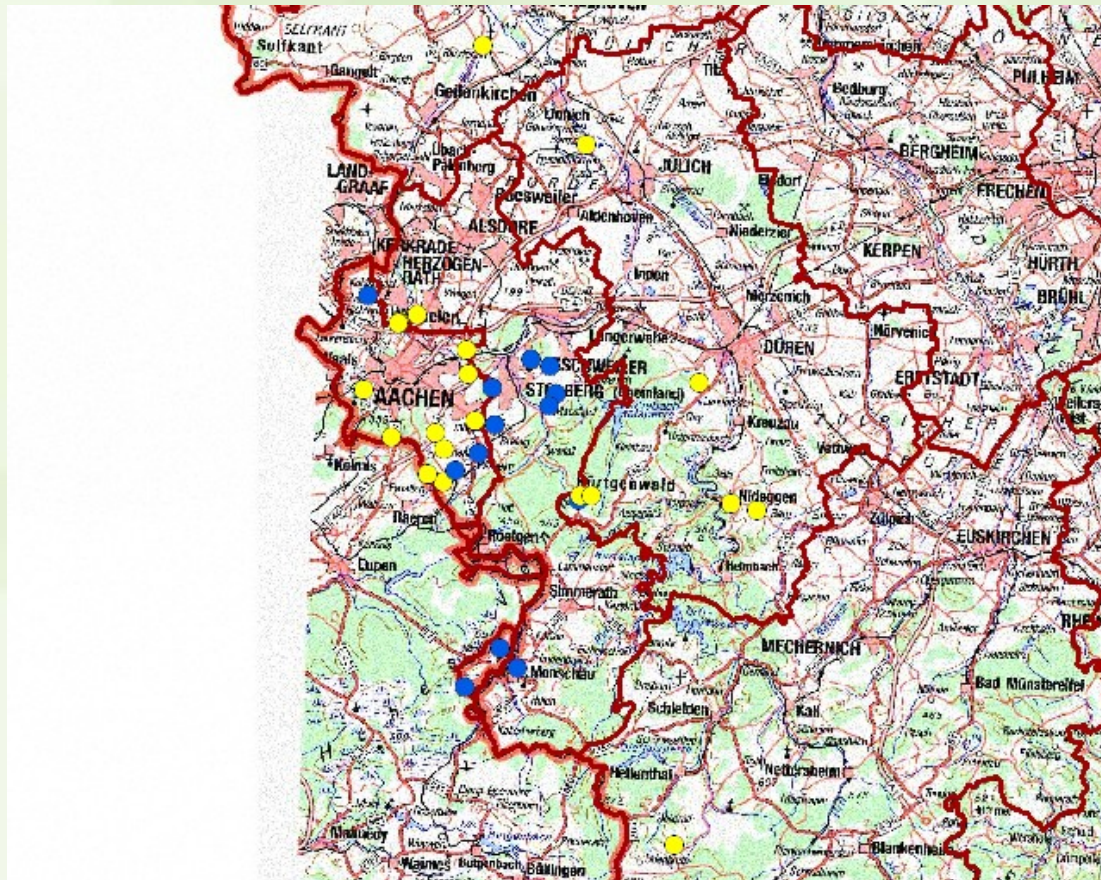


suspicions



Bluetongue – confirmed cases and suspicions in Germany

(as of 28-8-06)

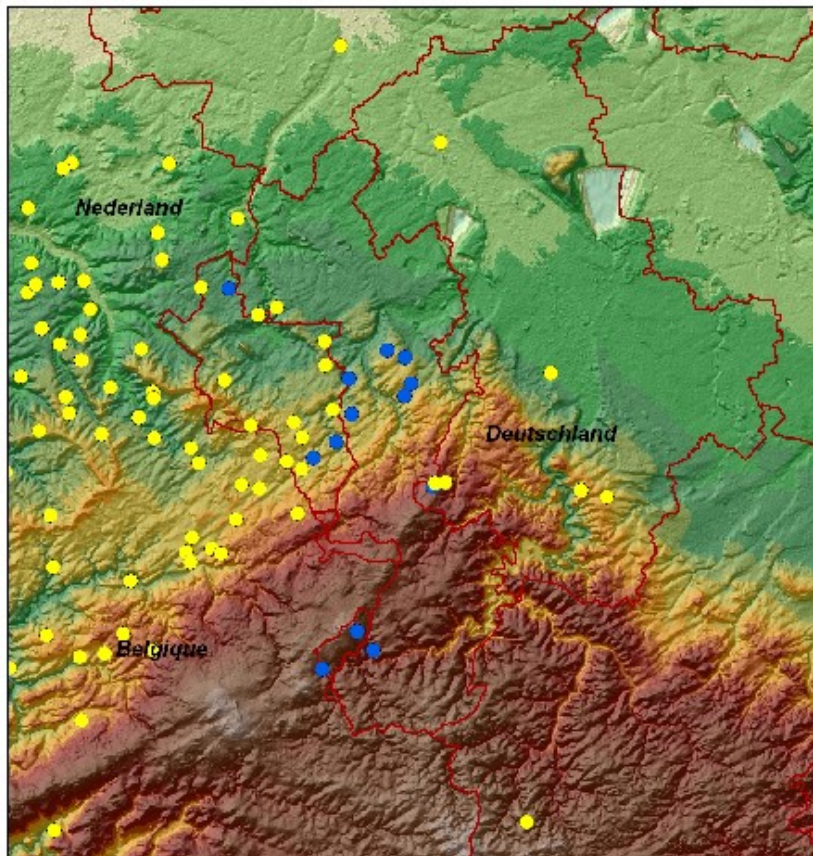


● confirmed cases

● suspicions

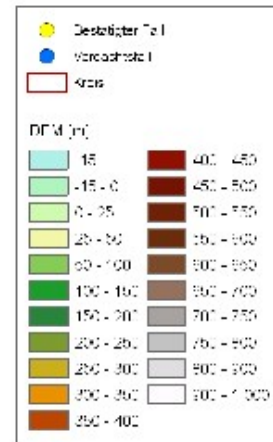


Bluetongue - topographical features (as of 28-8-06)



BT Feststellungen
und Verdachtsfälle

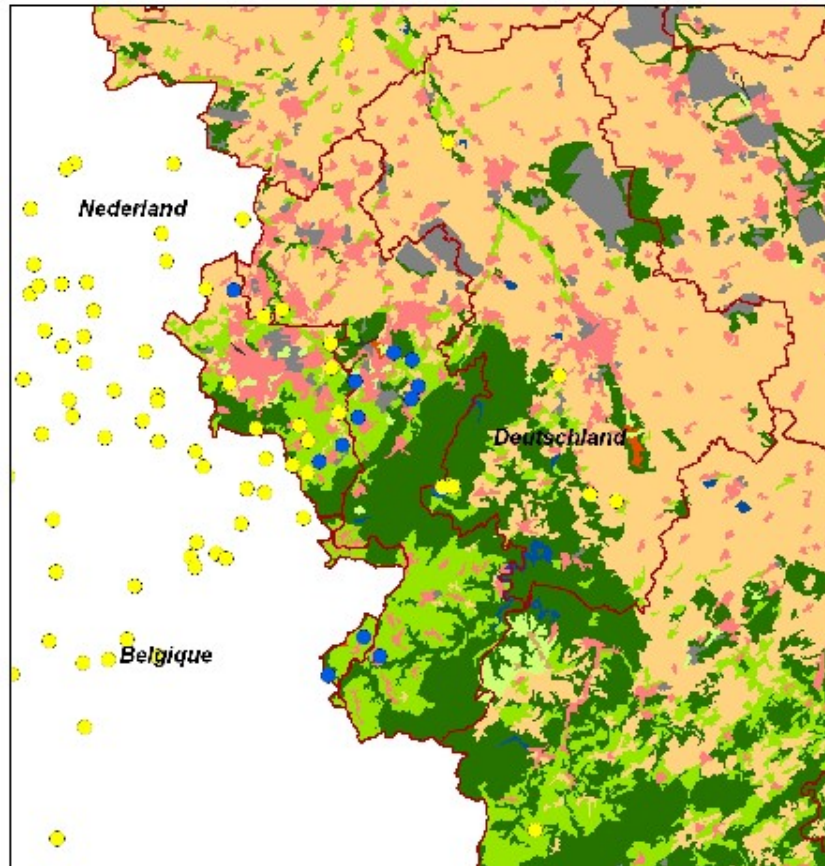
Höhenmodell
(SRTM-Daten)



0 2 4 8 12 km



Bluetongue – geographical situation (as of 28-8-06)



BT Feststellungen
und Verdachtsfälle

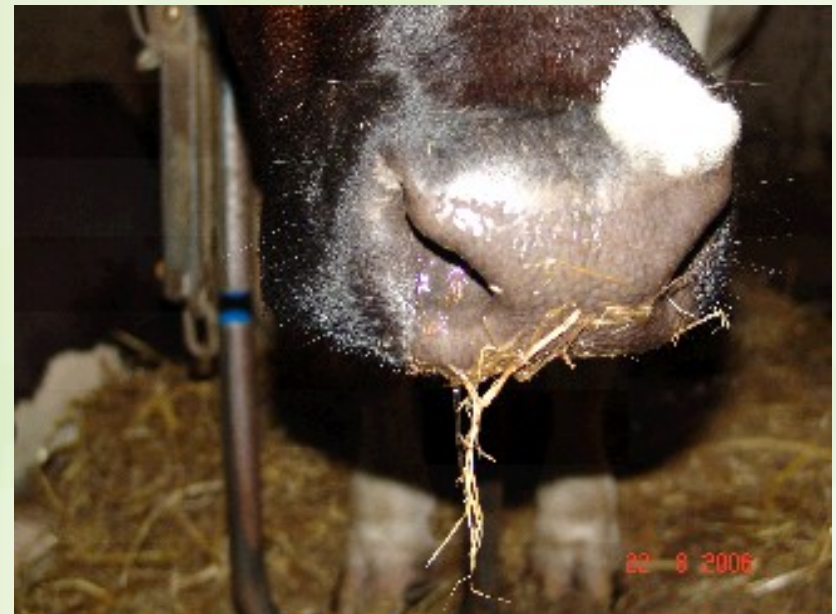
ökologische Kartierung
(CLC-Daten)



0 2 4 8 12 km



Bluetongue – clinical symptoms in cattle





Bluetongue – confirmed cases in Germany I (as of 28-8-06)

Kreis	location	species	number of animals in holding	number of animals with symptoms	percentage of animals with clinical symptoms	number of animals with positive lab results	percentage of animals with positive lab results	date of confirmation
Aachen	Würselen	sheep	17	2	11,7 %	2	11,7 %	21.8.06
Aachen (Stadt)	Eilendorf	cattle	199	10	5 %	1	1,6 %	21.8.06
Aachen (Stadt)	Verlautenheide	cattle	64	30	46,9 %	2	3,1 %	21.8.06
Aachen (Stadt)	Oberforstbach	cattle	106	30	28,3 %	10	9,4 %	21.8.06
Aachen (Stadt)	Schleckheim	cattle	264	15	5,7 %	1	0,4 %	21.8.06
Aachen (Stadt)	Krauthausen	cattle	68	30	44,1 %	1	1,5 %	21.8.06



Bluetongue – confirmed cases in Germany II (as of 28-8-06)

Kreis	location	species	number of animals in holding	number of animals with symptoms	percentage of animals with clinical symptoms	number of animals with positive lab results	percentage of animals with positive lab results	date of confirmation
Düren	Hürtgenwald	cattle	68	1	1,5 %	1	1,5 %	21.8.06
Düren	Barmen (Jülich)	sheep	42	3	7,1 %	1	2,4 %	21.8.06
Düren	Nideggen	cattle	52	0	0 %	1	1,9 %	21.8.06
Heinsberg	Heinsberg	sheep	17	1	5,9 %	1	5,9 %	24.8.06
Euskirchen	Hellenthal	cattle	122	1	0,8 %	1	0,8 %	25.8.06
Aachen (Stadt)	Bildchen	cattle	91	4	4,4 %	2	2,2 %	27.8.06
Aachen (Stadt)	Aachen-Soers	cattle	137	1	0,7 %	1	0,7 %	27.8.06
Aachen (Stadt)	Aachen-Sief	cattle	215	2	0,9 %	2	0,9 %	27.8.06
Aachen (Stadt)	Aachen-Sief	cattle	192	6	3,1 %	2	1,0 %	27.8.06



Bluetongue – confirmed cases in Germany III (as of 28-8-06)

Kreis	location	species	number of animals in holding	number of animals with symptoms	percentage of animals with clinical symptoms	number of animals with positive lab results	percentage of animals with positive lab results	date of confirmation
Aachen (Stadt)	Aachen (Soers)	cattle	59	2	3,4 %	1	1,7 %	27.8.06
Aachen (Stadt)	Aachen	cattle	56	22	39,3 %	6	10,7 %	27.8.06
Düren	Birgel	cattle	27	16	59,3 %	3	11,1 %	28.8.06
Düren	Hürtgenwald	cattle	188	10	5,3 %	7	3,7 %	28.8.06
Düren	Nideggen	cattle	32	3	9,4 %	1	3,1 %	28.8.06



Bluetongue – confirmed cases in Germany – summary (as of 28-8-06)

	number of farms involved	range of percentages of animals with clinical symptoms per holding	range of percentages of animals with positive lab results per holding
cattle	17	0,7 – 59,3 %	0,4 – 11,1 %
sheep	3	5,9 – 11,7 %	5,9 – 11,7 %
goat/ mixed holdings	0	0	0



Bluetongue – suspicions I (as of 28-8-06)

Kreis	location	species	number of animals in holding	number of animals with symptoms	percentage of animals with symptoms	date of suspicion
Aachen	Stolberg	cattle	9	1	11,1 %	21.8.06
Aachen	Monschau	goats/ sheep	4	2 (1/ 1)	50 %	21.8.06
Aachen	Monschau	cattle	152	2	1,3 %	21.8.06
Aachen	Stolberg	cattle	125	2	1,6 %	22.8.06
Aachen	Eschweiler	cattle	78	1	1,3 %	22.8.06
Aachen	Stolberg	cattle/ sheep	542	1 (sheep)	0,2 %	22.8.06
Aachen	Monschau	cattle	24	1	1,2 %	22.8.06
Düren	Hürtgenwald	cattle	154	1	0,6 %	22.8.06
Aachen	Stolberg	cattle	65	1	1,5 %	23.8.06
Aachen	Stolberg	cattle	177	2	1,1 %	23.8.06

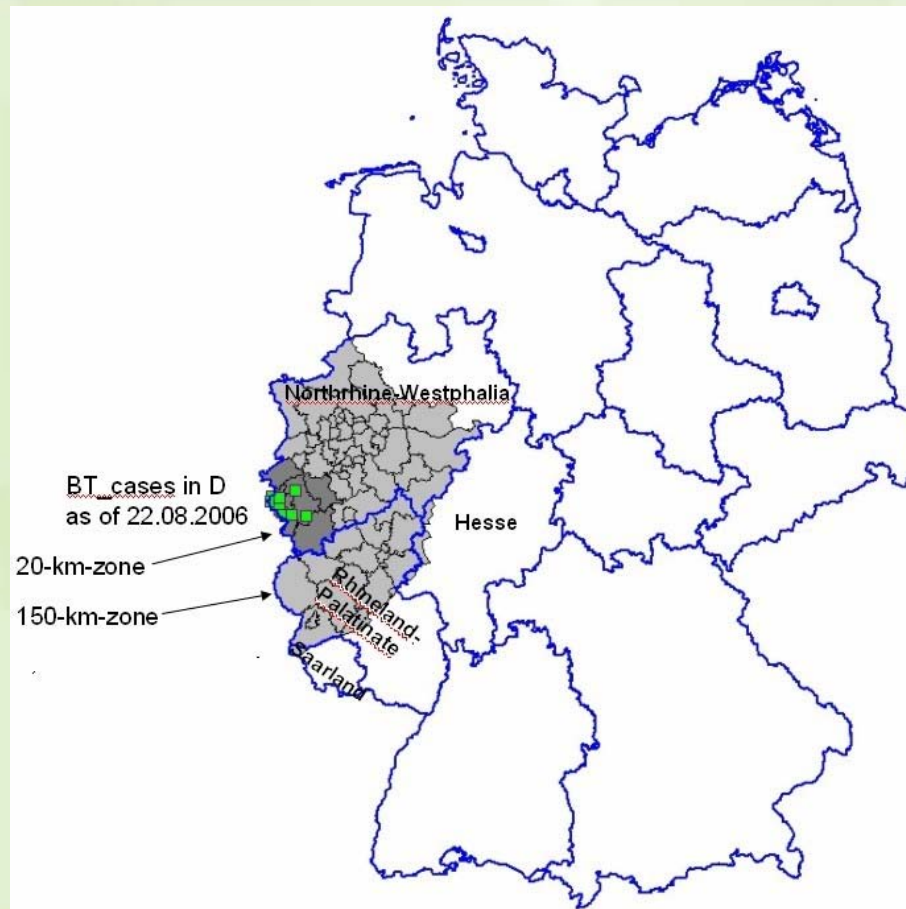


Bluetongue – suspicions II (as of 28-8-06)

Kreis	location	species	number of animals in holding	number of animals with symptoms	date of suspicion
Aachen (Stadt)	Aachen	cattle	51	4	23.8.06
Aachen (Stadt)	Aachen	cattle	75	4	23.8.06
Aachen (Stadt)	Aachen	cattle	103	1	25.8.06



Bluetongue – establishment of restriction zones (as of 22-8-06)





Bluetongue-

implemented measures (as of 28-8-06)

national ordinance

- published on 22 August 2006, entered into force 23 August 2006
- first amendment published 23 August 2006 entered into force 23 August
- contains movement restrictions for ruminants and for semen, ova and embryos that were derived after 1 May 2006 from inside the 150 km-zone to beyond this zone
- exceptions only for animals for immediate slaughter
- inside the 150 km-zone movement of ruminants to a neighbour member state is allowed
- transit on animals through the 150 km-zone only under special conditions (use of repellents, agreement of the MS of destination and MS that is passed, ...)



Bluetongue – further measures

(as of 28-8-06)

- **compulsory inhouse holding in the 20 km-zone for 24 hours/ if repellents are used only during the night**
- **movement ban on holdings having received ruminants from BT-affected areas after 1 July 2006, (11 holdings banned in NW, 8 outside the 150 km-zone)**
- **clinical and laboratory investigations of ruminants**
- **intensive epidemiological and entomological studies ongoing with the help of international experts**
- **evening lectures for veterinary practitioners all over the country**
- **information of stock holders**
- **checks of HIT-database: predominantly regional transports within NW**
- **export situation: currently > 600 pregnant heifers blocked in quarantine for third countries (e.g. Russia)**



Bluetongue – monitoring in Germany - procedure -

monitoring inside the restriction zone:

- in each „Kreis“ clinical investigation of 29 holdings with sheep/ cattle (assumed prevalence 10%, level of error 5%)
- if there are clinical symptoms investigation of blood samples of up to 29 animals per holding (assumed prevalence in herd 10%, level of error 5%)

monitoring outside the restriction zone (all over Germany):

- in each „Kreis“ clinical investigation of 29 holdings with sheep/ cattle (assumed prevalence 10%, level of error 5%) on a risk based approach
- in case of suspicion investigation of blood samples according to the above mentioned scheme



Risk-based bluetongue screening within 150-km-zone

	Total Nr. of farms with ruminants	Type of farm	Nr. of farms	Nr. of clinically examined farms	Nr. of clinically examined animals per farm	Nr. of farms with positive clinical findings
North Rhine-Westphalia	25.078	Cattle	16.100	224	According to 10/95-key	0
		Sheep	6.615	146	According to 10/95-key	0
		Goat	2.363	5	According to 10/95-key	0
		Mixed		49	According to 10/95-key	0
Rhineland-Palatinate	9.371	Cattle	6.157	34	74	0
		Sheep	2.561	14	192	0
		Goat	653	3	44	0
		Mixed	0 *	7	94	0
Hesse	381 **	Cattle	209 **	14	According to 10/95-key	0
		Sheep			According to 10/95-key	0
		Goat	157 **	14	According to 10/95-key	0
		Mixed	15 **	1	According to 10/95-key	0
Saarland		Cattle	93	25	60	0
		Sheep	14	4	12	0
		Goat	5	1	12	0
		Mixed	3			

* No data on total number available

** within the surveillance zone



Risk-based bluetongue screening outside 150-km-zone

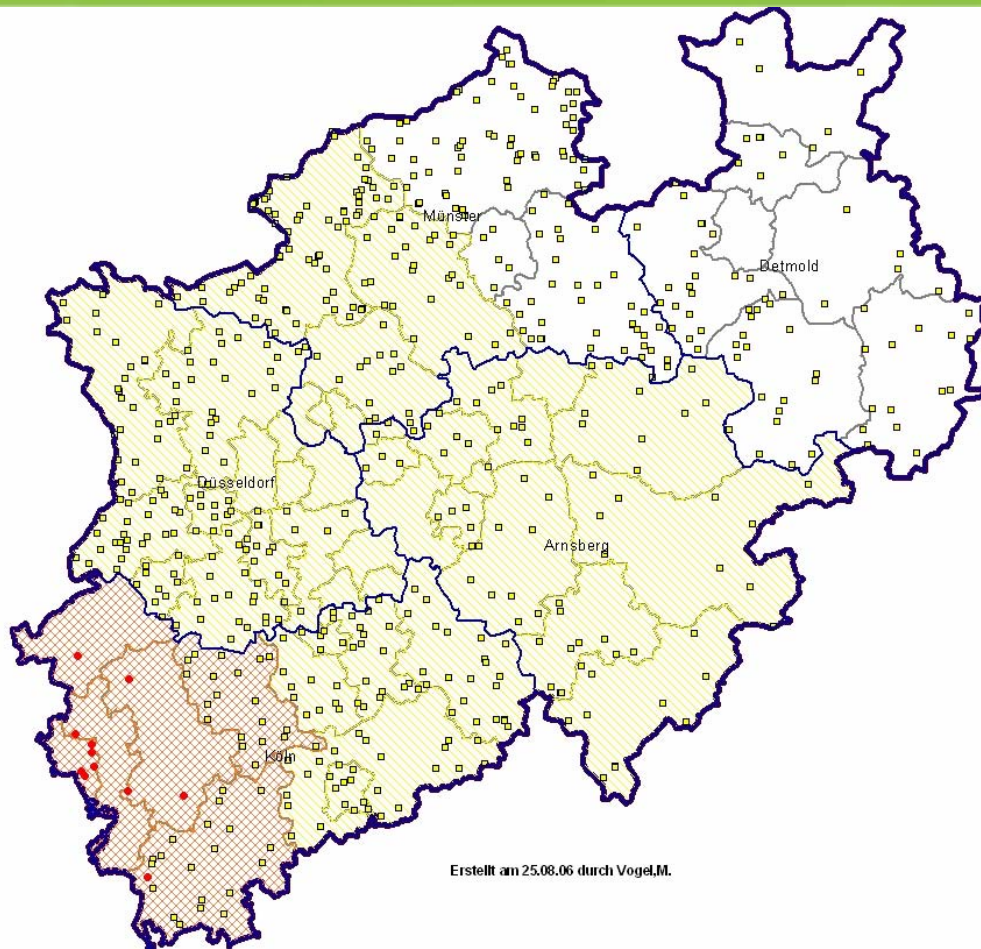
	Total Nr. of farms with ruminants	Type of farm	Nr. of farms	Nr. of clinically examined farms	Nr. of clinically examined animals per farm	Nr. of farms with positive clinical findings
North Rhine-Westphalia		Cattle		83	According to 10/95-key	0
		Sheep		49	According to 10/95-key	0
		Goat		1	According to 10/95-key	0
		Mixed		44	According to 10/95-key	0
Rhineland-Palatinate	2.486 **	Cattle	1.679	15	59	0
		Sheep	593 **	9	253	0
		Goat	214 **	0	0	0
		Mixed	0 *	5	84	0
Saarland	2.198	Cattle	875	25	57	0
		Sheep	851	10	37	0
		Goat	300	8	20	0
		Mixed	172			
Lower Saxony	42.002	Cattle	30.000	259	According to 10/95-key	0
		Sheep	8.596	197	According to 10/95-key	0
		Goat	3.406	12	According to 10/95-key	0
		Mixed		102	According to 10/95-key	0

* No data on total number available

** preliminary data



Bluetongue – clinical investigations of sheep and cattle herds in North Rhine-Westphalia (as of 25-8-06)



Erstellt am 25.08.06 durch Vogel,M.

- confirmed cases
- holdings clinically investigated with negative result



Bluetongue - to be continued ...

- **use of the German database for classical swine fever in wild boar as a base to deal with data for bluetongue**
- **continued close cooperation between the Member states and COM**
- **working daily video-/ telephone conference**
- **cooperation with entomologists**
- **cooperation with regard to position of export issues with third countries**
- **help of international experts: Heather Elliot and Rudy Meiswinkel**



Bundesministerium für
Ernährung, Landwirtschaft
und Verbraucherschutz

Thank you for your attention!